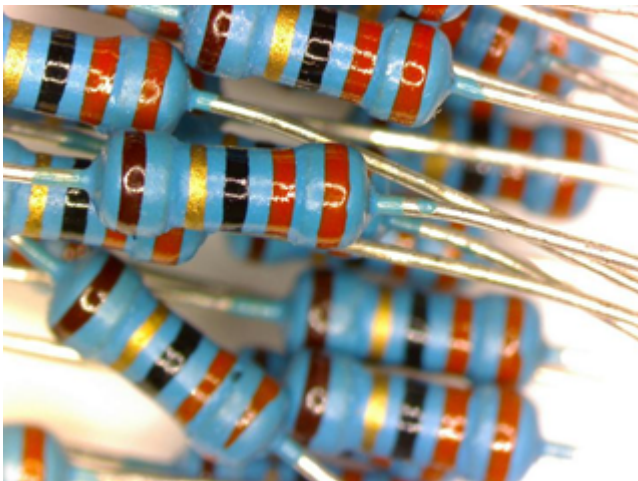
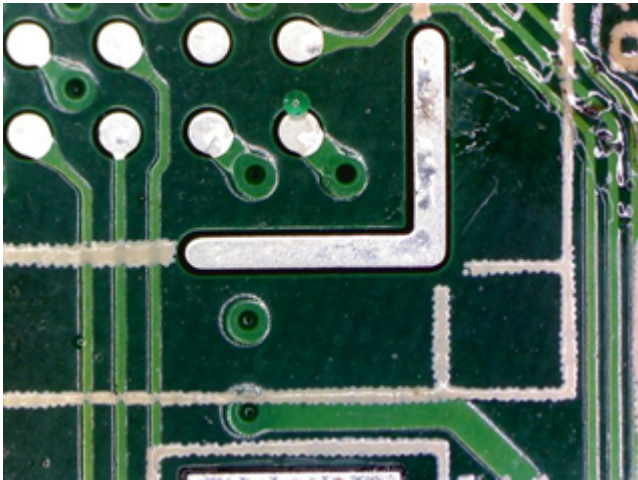


# Stereo Microscope IMS-1620



Stereo Microscope IMS-1620 is suitable for school education, circuit board inspection, and repair, surface mount technology work, electronics inspection, coin collecting, gemology and gemstone setting, engraving, inspection and repair of small parts. The binocular, and trinocular viewing head and V-shaped objective. The stand has the same ergonomic design with the incident lighting systems are rheostat controlled by LED lamp that allows the illumination that allows the illumination to be adjusted to suit the sample type. Provide upright, un-reversed 3D images with high resolution and high quality.

### Sample Images



## Technical Specification:

Model	IMS-1620
Type	Stereo Microscope
Viewing Head	Trinocular Viewing Head, at 45°, 360° rotatable, Interpupillary adjusting distance 55-75mm
Eyepiece	Diopter Adjustment: WF10x/23mm
Objective	Changeable objective: 2X, 4X 97 mm and Head Mount-76 mm
Light Source	Incident Illumination 100V-240V/ LED and Transmitted Illumination 100V-240V/ LED
Standard Accessories	0.5x C-mount video adaptor
Optional Accessories	1x C-mount or 23.2mm video tube, Photo Adapter, eyepiece, objective
Magnification	5X-240X
Catalogue No.	440155-10-04

## Technical Data:

Model	IMS-1610	IMS-1620
Type	Stereo Microscope	
Viewing Head	Binocular Viewing Head, at 45°, 360° rotatable, Interpupillary adjusting distance 55-75mm(optional: Binocular Viewing Head, at 60°, 360° rotatable, Interpupillary adjusting distance 55-75mm)	Trinocular Viewing Head, at 45°, 360° rotatable, Interpupillary adjusting distance 55-75mm(optional: Binocular Viewing Head, at 60°, 360° rotatable, Interpupillary adjusting distance 55-75mm)
Magnification	5X-240X	
Focusing	Coarse Focus, Focusing Range 100mm	
Eyepiece	Diopter Adjustment: WF10x/23mm (optional: WF10X22mm,WF10X20mm,WF15X16m, WF20X12mm, WF30X8mm, WF10X eyepiece with cross hair)	
Objective	Changeable objective: 2X, 4X 97 mm and Head Mount-76 mm(optional: Changeable- 2X, 3X; 1X, 2X;1X, 3X;1X, 4X, Auxiliary objective : 2X, 30mm, 0.75X 120mm, 0.63X,137mm, 0.5X ,180 mm	
Light Source	Incident Illumination 100V-240V/ LED and Transmitted Illumination 100V-240V/ LED	
Certification		
Accessories	0.5x C-mount video adaptor	
Optional Accessories	1x C-mount or 23.2mm video tube, Photo Adapter	
Packing Dimension		
Packing Weight		
Electrical Requirement		
Catalogue No.	440155-05-04	440155-10-04



**Iris Analytical Ltd.**

66 W Flagler St #900 Miami, Florida 33130 United States