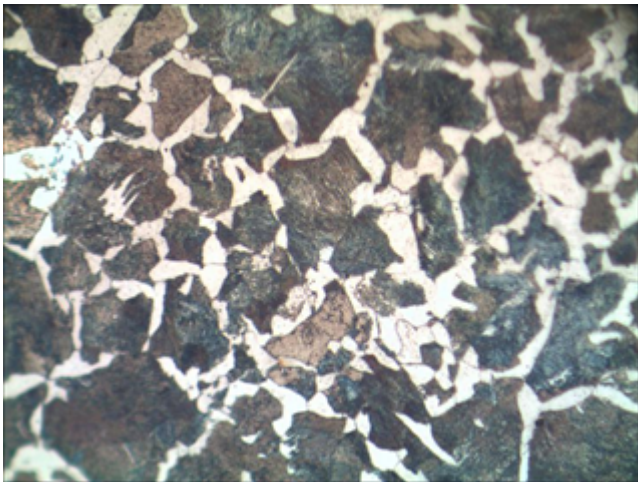
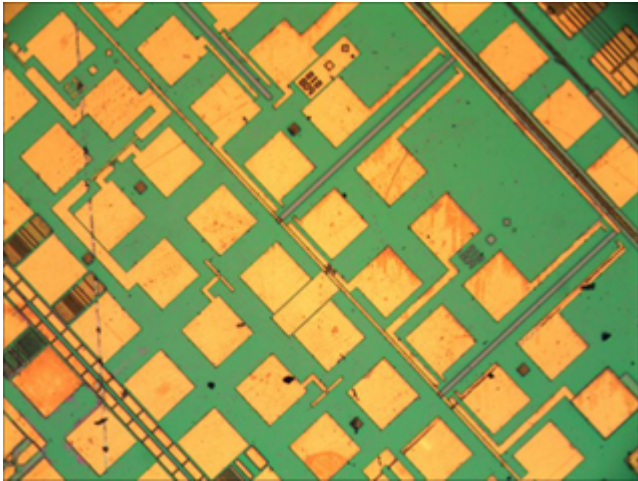


Laboratory Metallurgical Microscope IMM-1188



Laboratory Metallurgical Microscope IMM-1188 is a part of the range of laboratory microscope and stands out through its design which is ergonomic, vigorous and constant and stable. This laboratory microscope is used to view samples that will fit on the microscope stage. This range, with its large working distance with infinite plan achromatic: 4X/0.1/∞/-17.3 mm, 10X/0.25/∞/-10.0 mm, 40X/0.60/∞/0-2.9 mm objective. Adjustable 6V/20W halogen lamp Koehler illumination and epi-illuminator ensures the optimum illumination of the materials to be tested. The illuminating system consists of a high-intensity light source, Abbe N.A. 1.25 condenser lenses with Iris Diaphragm. The binocular and trinocular viewing head with wild field WF10X18 mm eyepieces fitted with 48-75mm interpupillary distance as standard. Blue, Green, Yellow and Ground filters are often used to recover detail and polarizing filters, to produce surface glare and to recover grain boundary definition.

Sample Images



Technical Specification:

Model	IMM-1188
Type	Laboratory Metallurgical Microscope
Viewing Head	Trinocular head, inclined at 30°, 360° rotatable, interpupillary distance 48-75mm
Optical System	Infinite
Focusing	Coaxial Coarse & Fine Adjustment, Fine Division 0.002mm, Coarse Stroke 37.7mm/ Rotation, Fine Stroke 0.2mm/ Rotation, Range 20mm
Eyepiece	WF10X18mm
Nosepiece	Quadruple
Objective	Infinite Plan Achromatic : 4X/0.1/∞/- 17.3mm, 10X/0.25/∞/- 10.0mm, 40X/0.60/∞/0-2.9mm
Stage	Double layer mechanical stage 150×140mm, moving range 75×50mm
Light Source	6V/20W Halogen lamp Kohler Illumination, Epi-illuminator
Filter	Blue, Green, Yellow and Ground filters
Optional Accessories	Specimen Presser For metallurgical specimen preparation; Polarizer and Analyzer; Photo and Video Adapter
Catalogue No.	440250-10-04

Technical Data:

Model	IMM-1144	IMM-1188
Type	Laboratory Metallurgical Microscope	
Viewing Head	Binocular head, inclined at 30°, 360° rotatable, interpupillary distance 48-75mm	Trinocular head, inclined at 30°, 360° rotatable, interpupillary distance 48-75mm
Optical System	Infinite	
Focusing	Coaxial Coarse & Fine Adjustment, Fine Division 0.002mm, Coarse Stroke 37.7mm per Rotation, Fine Stroke 0.2mm per Rotation, Range 20mm	
Eyepiece	WF10X18mm (optional: WF8X18mm, WF10X18mm with 0.1mm micrometer and cross hair WF12.5X15mm)	
Nosepiece	Quadruple	
Objective	Infinite Plan Achromatic : 4X/0.1/?/- 17.3mm, 10X/0.25/?/- 10.0mm, 40X/0.60/?/0-2.9mm(optional: 5X/0.12/?/-15.5mm, 20X/0.40/?/0 - 5.8mm, 40X/0.65/?/0-0.52mm, 50X/0.75/?/0- 0.32mm, 80X/0.90/?/0- 0.2mm, 100X/0.80/?/0 - 2mm)	
Stage	Double layer mechanical stage 150×140mm, moving range 75×50mm	
Light Source	6V/20W Halogen lamp Kohler Illumination, Epi-illuminator (OPTIONAL: 3W LEDKohler Illumination, Epi-illuminator)	
Polarizing Unit	OPTIONAL	
Analyzing Unit		
Filter	Blue, Green, Yellow and Ground filters	
Certification		
Optional Accessories	Specimen Presser For metallurgical specimen preparation; Polarizer and Analyzer; Photo and Video Adapter	
Packing Dimension		
Packing Weight		
Electrical Requirement		
Catalogue No.	440250-05-04	440250-10-04



Iris Analytical Ltd.

66 W Flagler St #900 Miami, Florida 33130 United States